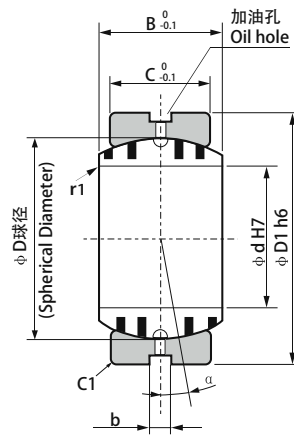


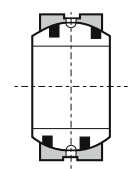
YCB050Z 标准自润滑球铰 Oilless Sphericar Plain Bushing



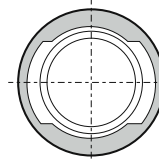
Spherical bushing assembly

关节轴承的装配

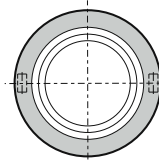
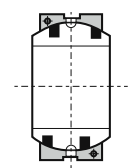
• HTB-3QJ 015~090



Fixing direction
安装方向



• HTB-3QJ ≥ 100



单位Unit: mm

型号 Parts No.	d	H7	D1	h6	B	C	D	b	调整角度 Alignment Angle α°	径向承载 Allowable Radial Load (kN)	径向承载 Allowable Thrust Load (kN)
YCB050Z-015	15	$+0.018$ 0	26	0 -0.013	12	9	22	4	8	6.5	0.5
YCB050Z-020	20	$+0.021$ 0	32	0 -0.016	16	14	28	"	4	12.6	1.4
YCB050Z-025	25	"	42	"	21	18	36	"	5	21.8	2.5
YCB050Z-030	30	"	50	"	27	23	44	"	6	32.0	3.5
YCB050Z-035	35	$+0.025$ 0	55	0 -0.019	30	26	49	"	5	43.7	4.8
YCB050Z-040	40	"	62	"	33	28	55	"	6	54.7	5.7
YCB050Z-045	45	"	72	"	36	31	62	"	5	69.7	7.2
YCB050Z-050	50	"	80	"	42	36	70	"	"	92.4	10
YCB050Z-060	60	$+0.030$ 0	100	0 -0.022	53	45	90	"	6	143	16
YCB050Z-070	70	"	110	"	58	50	99	"	5	181	20
YCB050Z-080	80	"	130	"	70	60	115	"	6	254	30
YCB050Z-090	90	$+0.035$ 0	140	0 -0.025	76	65	125	"	"	313	36
YCB050Z-100	100	"	160	"	88	75	145	6	"	544	64
YCB050Z-110	110	"	170	"	93	80	155	"	5	642	73
YCB050Z-120	120	"	190	0 -0.029	105	90	17	"	6	797	94
YCB050Z-130	130	$+0.040$ 0	200	"	110	95	180	"	5	880	105
YCB050Z-140	140	"	210	"	90	70	"	"	7	668	56
YCB050Z-150	150	"	220	"	120	105	200	"	5	1135	129
YCB050Z-160	160	"	230	"	105	80	"	"	8	891	73
YCB050Z-180	180	"	260	0 -0.032	105	"	225	"	6	1002	74
YCB050Z-200	200	$+0.046$ 0	290	"	130	100	250	"	7	1434	117
YCB050Z-220	220	"	320	0 -0.036	135	"	275	"	8	1577	118
YCB050Z-240	240	"	340	"	140	"	300	9	"	1720	"
YCB050Z-260	260	$+0.052$ 0	370	"	150	110	325	"	7	2072	143
YCB050Z-280	280	"	400	"	155	120	350	"	6	2455	172
YCB050Z-300	300	"	430	0 -0.040	165	120	375	"	7	2630	"